

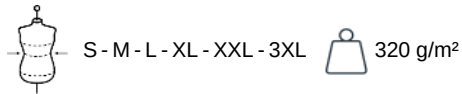
KARIBAN  
PREMIUM

PK404

## Men's zipped jacket

- High quality jacket with a contemporary cut.
- LSI treatment (Low Shrinkage Interlock) guaranteeing garment will not shrink as much.

70% cotton / 26% polyester / 4% elastane. Combed cotton. Interlock fabric. LSI treatment (Low Shrinkage Interlock). Overstitching at the neck. Taped neck inside the neckline. Matching metal and nylon zip with taped neck inside. Raglan sleeves. 1x1 rib. 2 pockets in the yoke seam. No brand label, only size tag for easy decoration access.



**No LaBeL** LSI

### More information

#### Logistic



#### Country of origin



BD - Bangladesh

#### Customs code



61102099

#### Washing instructions

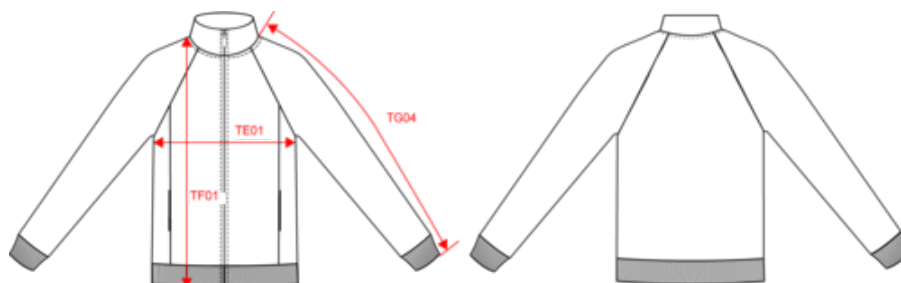


KARIBAN  
PREMIUM

PK404

Men's zipped jacket

Dimensions (cm)



Measurements in cm	S	M	L	XL	XXL	3XL
TE01 - 1/2 chest width at 1.5cm below armhole	52.00	55.00	58.00	61.00	64.00	67.00
TF01 - Total height from HSP	70.00	72.00	74.00	76.00	78.00	80.00
TG04 - Raglan long sleeve length	77.50	79.25	81.00	82.75	84.50	86.25

# KARIBAN PREMIUM

PK404

## Men's zipped jacket

### Colours information



**Black**

RVB : 35,35,37  
Pantone C : Black  
Pantone TCX : 19-4004TCX



**Deep Navy**

RVB : 34,35,47  
Pantone C : 532C  
Pantone TCX : 19-3924TCX

Logistic



5



20

Sizes	Width (cm)	Height (cm)	Length (cm)	Net weight (kg)	Gross weight (kg)	Pieces/Box	Pieces/Bundle
S	40.00	32.00	60.00	8.10000	9.50000	20	5
M	40.00	32.00	60.00	8.70000	10.10000	20	5
L	40.00	32.00	60.00	9.00000	10.40000	20	5
XL	40.00	34.00	60.00	9.60000	11.00000	20	5
XXL	40.00	34.00	60.00	10.20000	11.60000	20	5
3XL	40.00	34.00	60.00	10.80000	12.20000	20	5